

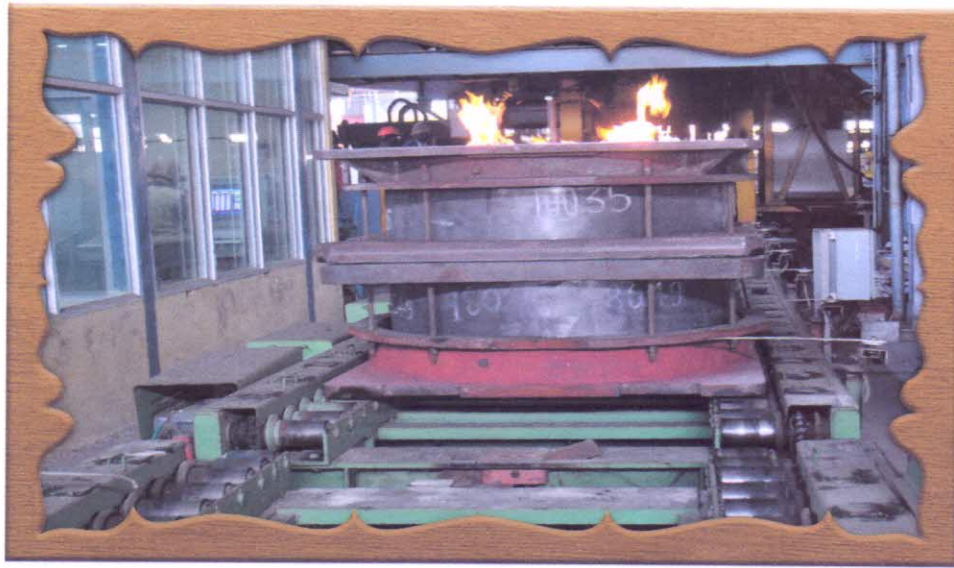


भारत सरकार
रेल मंत्रालय
Govt. of India
Ministry of Railways

रेल पहिया कारखाना / बेला
Rail Wheel Plant/Bela

एम.सी.डी.ओ. MCDO

अप्रैल April 2017



पो.- अरविन्द नगर, जिला- सारण, बिहार- 841221
P.O. - Arvind Nagar, Distt.-Saran, Bihar-841221

Website: www.rwp.indianrailways.gov.in



सत्यमेव जयते
MINISTRY OF RAILWAYS

RAIL WHEEL PLANT
Vill. - BELA
P.O.- ARVIND NAGAR,
DISTT.- SARAN,
BIHAR-841221
Ph.: 06158-272116
Fax: 06158-272120

Ramesh Kumar
Chief Administrative Officer

D.O.No.RWP/CAO/MCDO/17

Date: 09/05/2017

Dear Shri Guptaji,

Sub:- MCDO for the month of April, 2017

1.0 Highlights

1.1 Dispatch of Wheels:-

Record number of **3155** wheels (BOXN- 1490 & BG coaching- 1665) were despatched during the month. Despatches upto April'17 are about 1.8 times over the same period of 2016-17 as can be seen from the table below:-

BOXN/ BG Coaching	Period	Ist Qtr. (Upto April-17)	Cummulative	Remarks
BOXN/ BG Coaching	16-17	1794	1794	About 1.8 times over 2016-17
BG Coaching	17-18	3155*	3155	

* Against 1st quarterly target of 7710 wheels (BOXN-4375 and BG Coaching-3335).

1.2 Casting of Wheels:-

2509 BG Coaching wheels were cast from 78 heats during April'2017. Out of this 2477 wheels (98%) were with good chemistry. However, Wheels Cast upto April'17 can be seen from the table below:-

BOXN/ BG Coaching	Period	Ist Qtr. (Upto April-17)	Cummulative	Remarks
BOXN/ BG Coaching	16-17	2049	2049	About 1.2 times over 2016-17
BG Coaching	17-18	2509	2509	

1.3 Wheel SPG and Hub Cut:-

2458 BG Coaching wheels were processed for re-work for SPG & Hub cutting work during April'17. Cummulative figure is about 1.1 times over the same period of 2016-17 as can be seen from the table below:-

BOXN/ BG Coaching	Period	Ist Qtr. (Upto April-17)	Cummulative	Remarks
	16-17	2270	2270	About 1.1 times over 2016-17
BG Coaching	17-18	2458	2458	

1.4 Heat Treatment of Wheels:-

2108 BG coaching wheels were heat treated during April'17. Cumulative figure is about 4.9 times over the same period of 2016-17 as can be seen from the table below:-

BOXN & BG Coaching	Period	Ist Qtr. (Upto April-17)	Cummulative	Remarks
	16-17	433	433	About 4.9 times over 2016-17
BG Coaching	17-18	2108	2108	

1.5 Plant is on the way of continuous improvement w.r.t. quality of wheels cast despite intermittent two shift working, as can be seen from the following trend of rejections:-

Period	All wheels (BOXN+BGC)	*BG Coaching
2014-15	66.8%	-
2015-16	35.3%	-
2016-17	20.06%**	11.88%
2017-18 (UPTO APRIL'17)	11.85%	11.85%

1.6 Detailed production performance is attached as **Annexure-2**.

1.7 Performance of Mechanical maintenance (**Annexure-3**), Electrical maintenance (**Annexure-4**), Accounts (**Annexure-5**), Enginering (**Annexure-6**), Medical (**Annexure-7**), Personnal (**Annexure-8**) and Stores (**Annexure-9**) is also attached.

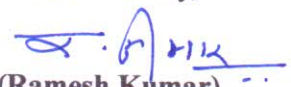
2.0 ACTION PLAN FOR 2017-18 (Railway Board Items)

Sl. No.	Railway Board's item No.	Item	Progress	Target
1	3.4	IRIS (International Railway Safety Standard) accreditation	Quotation called for GAP analysis prior to IRIS certification of RWP/Bela. Quotation Opening due on 25.05.2017.	March, 2018
2	6.6	IMS certification	Already achieved in Dec., 2016.	Done
3	6.7	ISO 50001 certification for energy management	LOA issued.	October, 2017
4	6.8	Certification as Green Industrial Unit	Put up to GM approval for calling single tender on CII-Sohrabji Goderage Business Centre, Hyderabad.	December, 2017
5	CME's Conference Item	NABL certification of Chemical & Metallurgical Laboratory	Open Tender floated. Tender Opening due on 01.06.2017.	December, 2017

3.0 Assistance required (**Annexure-1**) is already highlighted in my previous MCDO. I request you for expediting these items to streamline the functioning of this new PU.

with kind regards, sir

Yours sincerely,


(Ramesh Kumar)

Encl: As above.

Shri Ravindra Gupta
Member (Rolling Stock),
Railway Board,
Rail Bhavan,
New Delhi- 110001

Rail Wheel Plant, Bela

MCDO for the Month of April, 2017

Assistance Required

1. Adequate allotment of cast wheels:

During 2016-17, RWP/Bela was mandated to supply 25,000 BOXN wheels as per production programme dated 07.12.2015 which was subsequently revised to 22,500 wheels (12,500 BOXN and 10,000 BG Coaching) vide Railway Board letter DME(PU)/2014/M(PU)/1/36 dated 27.06.2016. All planning such as procurement of production consumables, uncommon items and necessary modification in the plant for BG Coaching wheels, etc. was done accordingly and 1st lot of 250 BG Coaching Wheels was despatched on 21.10.2016.

However, quarterly allotment of wheels decided during WTA meeting by Stores department has not been commensurate with the production programme. Only 65% of wheels as per the revised production programme have been allotted in all 4 quarters of 2016-17. This is despite that need for adequate allotment was brought to the notice of all concerned in WTA meetings.

There is a need to address this issue in a holistic manner to decide the future of RWP, Bela which can only produce cast wheels.

2. Release of staff by WP:-

WPO/Patna has forcibly kept 49 staff of RWP/Bela. This is one of main bottle neck in managing affair of this plant

3. Joint inspection of officers Qtrs. etc.:-

As decided in Rly. Board during meeting with WPO/Patna on 28.10.2016, the work of joint inspection of assets has been taken up. However complete drawing, layout of drainage and layout of sewage treatment plant etc. have still not been handed over by WPO/Patna. WPO/Patna may be asked to expedite handing over of all necessary documents and joint inspection of assets. Thereafter, deficiencies observed during joint inspection needs to be attended by WPO/Patna.

In addition to the deficiencies observed during joint inspection, WPO/Patna has also been advised to provide facilities i.e Storage almirah in officers colony and staff quarters, Tube Well with chlorination and filtration Plant, Rain water harvesting and Modular Kitchen in Danapur rest house.

These facilities are essential for comfortable stay of officers and staff at RWP/Bela.

4. Creation of new posts:-

Proposals for creation of 772 non-gaz. and 47 Gaz. posts in different departments for achieving the target production of 1 lakh wheels per anum has been sent to Railway Board vide letter no. RWP/Bela/NG/Post Creation dated 26.11.2015 and letter no.

