

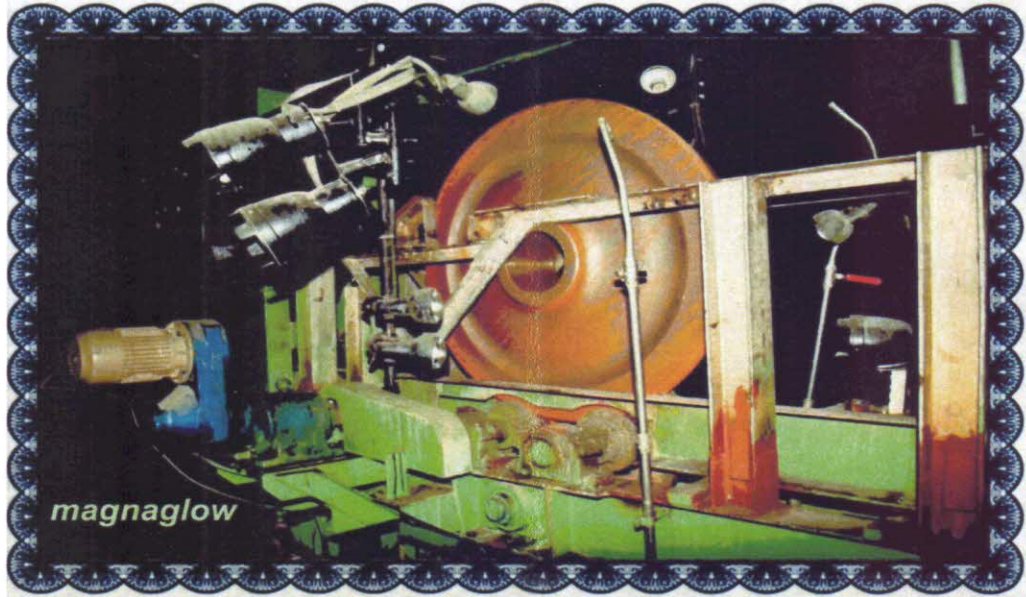


भारत सरकार  
रेल मंत्रालय  
Govt. of India  
Ministry of Railways

रेल पहिया कारखाना / बेला  
Rail Wheel Plant/Bela

एम.सी.डी.ओ. MCDO

फरवरी February 2017



पो.- अरविन्द नगर, जिला- सारण, बिहार- 841221  
P.O.- Arvind Nagar, Distt.-Saran, Bihar-841221

Website: [www.rwp.indianrailways.gov.in](http://www.rwp.indianrailways.gov.in)



सत्यमेव जयते  
MINISTRY OF RAILWAYS

RAIL WHEEL PLANT  
Vill. - BELA  
P.O.- ARVIND NAGAR,  
DISTT.- SARAN,  
BIHAR-841221  
Ph.: 06158-272116  
Fax: 06158-272120

**Ramesh Kumar**  
Chief Administrative Officer

D.O.No.RWP/CAO/MCDO/16

Date: 07/03/2017

Dear Shri Gupthaji

**Sub:- MCDO for the month of February, 2017**

**1.0 Highlights**

**1.1 Dispatch of Wheels:-**

A total of **1556** wheels (BOXN- 984 & BG coaching- 572) were despatched during the month. In addition, **10454 (BOXN-6287 & BG Coaching-4167) wheels are awaiting despatch**. Despatches upto February'17 are about 1.1 times over the same period of 2015-16 as can be seen from the table below:-

	Period	Ist Qtr.	IInd Qtr.	IIIrd Qtr.	IVth Qtr. (Upto Feb'17)	Cummulative	Remarks
BOXN	15-16	839	433	4464	4012	<b>9748</b>	<b>About 1.1 times over 2015-16</b>
	16-17	3244*	763**	3045***	1392****	8444	
BG Coaching	16-17	0	0	1423***	740****	2163	
<b>Total</b>	<b>16-17</b>	<b>3244</b>	<b>763</b>	<b>4468</b>	<b>2132</b>	<b>10607</b>	

\* Against 1<sup>st</sup> quarterly target of 3100 wheels.

\*\* Against 2<sup>nd</sup> quarterly target of 2258 wheels (BOXN-408 and BG Coaching-1850).  
BG Coaching wheel production started from Sep'2016 and despatch started from Oct'16.

\*\*\* Against 3<sup>rd</sup> quarterly target of 4490 wheels (BOXN-3030 and BG Coaching-1460).

\*\*\*\* Against 4<sup>th</sup> quarterly target of 4913 wheels (BOXN-3413 and BG Coaching-1000).

## 1.2 Casting of Wheels:-

Casting of wheels remained suspended w.e.f. 19.01.2017 due to wheels already being available to meet with revised production Programme 2016-17. However, Wheels Cast upto February'17 can be seen from the table below:-

	Period	Ist Qtr.	IInd Qtr.	IIIrd Qtr.	IVth Qtr. (Upto Feb'17)	Cummulative	Remarks
BOXN	<b>15-16</b>	3696	6554	7167	6507	<b>23924</b>	-----
	16-17	7616	0*	0*	0*	7616	
BG Coaching	16-17	0	2242	10005	2147	14394	
<b>Total</b>	<b>16-17</b>	<b>7616</b>	<b>2242</b>	<b>10005</b>	<b>2147</b>	<b>22010</b>	

\* No Casting of BOX'N' wheels was done due to revision in production programme during July-2016 by PU Directorate.

## 1.3 Wheel SPG and Hub Cut:-

2698 BG Coaching wheels were processed for re-work for SPG & Hub cutting work during February'17. Cummulative figure is about 1.3 times over the same period of 2015-16 as can be seen from the table below:-

	Period	Ist Qtr.	IInd Qtr.	IIIrd Qtr.	IVth Qtr. (Upto Feb'17)	Cummulative	Remarks
BOXN	<b>15-16</b>	586	3908	6619	<b>7011</b>	<b>18124</b>	<b>About 1.3 times over 2015-16</b>
	16-17	7625	4510	0	0	12135	
BG Coaching	16-17	0	1453	5419	5056	11928	
<b>Total</b>	<b>16-17</b>	<b>7625</b>	<b>5963</b>	<b>5419</b>	<b>5056</b>	<b>24063</b>	

## 1.4 Heat Treatment of Wheels:-

235 BG coaching wheels were heat treated during February'17. Cumulative figure is about 1.6 times over the same period of 2015-16 as can be seen from the table below:-

	Period	Ist Qtr.	IInd Qtr.	IIIrd Qtr.	IVth Qtr. (Upto Feb'17)	Cummulative	Remarks
BOXN	<b>15-16</b>	0	3845	4814	6128	<b>14787</b>	<b>1.6 times over 2015-16</b>
	16-17	8080	6132	0	0	14212	
BG Coaching	16-17	0	1273	4403	4397	10073	
<b>Total</b>	<b>16-17</b>	<b>8080</b>	<b>7405</b>	<b>4403</b>	<b>4397</b>	<b>24285</b>	

1.5 Plant is on the way of continuous improvement w.r.t. quality of wheels cast despite intermittent two shift working, as can be seen from the following trend of rejections:-

Period	All wheels (BOXN+BGC)	*BG Coaching
2014-15	66.8%	-
2015-16	35.3%	-
2016-17 (up to Feb.'17)	21.03%**	12.35%
Sep'2016	29.09%**	21.09%
Oct'2016	22.17%**	15.33%
Nov'2016	26.69%**	11.64%
Dec'2016	14.95%**	9.79%
Jan'2017	14.07%**	10.15%
Feb'2017	8.55%	8.55%

\* BGC Casting started from Sep.'2016.

\*\* Includes BOXN wheels cast during 2014-15 & 2015-16 also.

1.6 Detailed production performance is attached as **Annexure-2**.

1.7 Performance of Mechanical maintenance (**Annexure-3**), Electrical maintenance (**Annexure-4**), Accounts (**Annexure-5**), Engineering (**Annexure-6**), Medical (**Annexure-7**), Personal (**Annexure-8**) and Stores (**Annexure-9**) is also attached.

2.0 Assistance required is already highlighted in my previous MCDO. Updated items where your kind intervention is requested are at Annexure-1. I request you for expediting these items to streamline the functioning of this new PU.

*with kind regards*

Yours sincerely,

  
(Ramesh Kumar)

**Encl:** As above.

Shri Ravindra Gupta  
Member (Rolling Stock),  
Railway Board,  
Rail Bhavan,  
New Delhi- 110001

